

Molecular & Biomedical Pharmacology News

VOLUME 2, ISSUE 7

July 26, 2013

Manuscripts

Chen KC, Blalock EM, Curran-Rauhut MA, Kadish I, Blalock SJ, Brewer L, Porter NM, Landfield PW (2013) Glucocorticoid-dependent hippocampal transcriptome in male rats: pathway-specific alterations with aging. *Endocrinology* 154:2807-2820.

Sims JT, Ganguly SS, Bennett H, Friend JW, Tepe J, Plattner R. *Imatinib reverses doxorubicin resistance by affecting activation of STAT3-dependent NF- κ B and HSP27/p38/AKT pathways and by inhibiting ABCB1*. *PLoS One*. 2013; 8(1): Epub 2013 Jan 31

Papaya RS, Shi T, Piascik MT, Naga Prasad SV, Perez DM. *α 1A-Adrenergic Receptors Regulate Cardiac Hypertrophy In Vivo Through IL-6 Secretion*. *Mol Pharmacol*. 2013 Feb 12.

Blomkains AL, Gavrilu D, Thomas M, Neltner BS, Blanco VM, Benjamin SB, McCormick ML, Stoll LL, Denning GM, Collins SP, Qin Z, Daugherty A, Cassis LA, Thompson RW, Weiss RM, Lindover PD, Pinney SM, Chatterjee T, Weintraub NL. *CD14 Directs adventitial macrophage precursor recruitment: role in early abdominal aortic aneurysm formation*. *J Am Heart Assoc*. 2013 Mar 8;2(2).

Chen X, Lu H, Rateri DL, Cassis LA, Daugherty A. *Conundrum of angiotensin II and TGF- β interactions in aortic aneurysms*. *Curr Opin Pharmacol*. 2013 Mar 12.

Hoyt RE, Speakman RO, Brown DR, Cassis LA, Silcox DL, Anigbogu CN, Randall DC. *Chronic angiotensin-II treatment potentiates HR slowing in Sprague-Dawley rat during acute behavioral stress*. *Auton Neurosci*. 2013 Mar;174(1-2).

Welcome new Molecular & Biomedical Pharmacology faculty



Florin Despa and his wife Sanda Despa have recently joined Molecular & Biomedical Pharmacology (MBP) faculty. Before coming to the University of Kentucky, the Despas were at University of California, Davis. Florin earned his Ph.D. from the Institute of Physics in Bucharest,

Romania and did post-doctoral studies in the Department of Chemistry at the University of Chicago. He was an assistant professor of research at UC Medical School and a John von Neumann visiting scientist at Research Center Juelich, Germany previous to his appointment at UC Davis. Florin's research focuses on the role of hyperamylinemia in diabetic heart disease and dementia. His work demonstrated for the first time that amylin, the amyloidogenic hormone making up the pancreatic amyloid in type-2 diabetes, also accumulates in the vascular system and peripheral tissues, thus contributing to car-

diac and cerebrovascular disease observed in diabetic patients. A July 1 article in DOTmed Daily News highlights [Florin Despa's work](#) that shows amylin is now being linked with Alzheimer's disease.



Dr. Sanda Despa holds a Ph.D. in Biomedical Sciences from Limburgs Universitair (now Hasselt) Diepenbeek, Belgium. (cont. p 2)

Announcements & Congratulations

Departmental Education Retreat at Hilary J. Boone Center on Wednesday, August 7 from Noon to 6 p.m. Mark your calendars.

Combined IBS Orientation August 12 (9 a.m. to 3:30 p.m.), Pharmacology will join Anatomy & Neurobiology and the Graduate Center for Nutritional Sciences for a combined departmental program for new IBS stu-

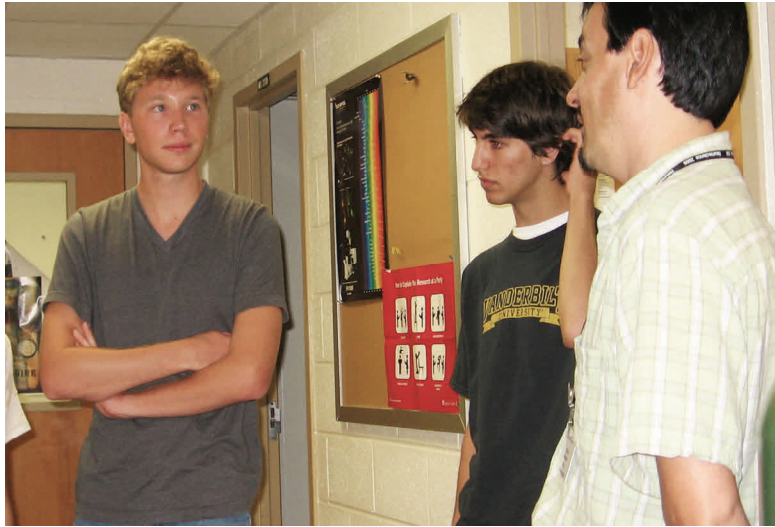
dents. Plenary will be in the Health Services Building and poster session in CTW Commons. All are invited to the ice cream social following the poster session.

Paulina Davis, PhD. candidate in Dr. Elizabeth Head's lab, has been accepted as a pre-doctoral scholar in the Clinical and Transitional Science Pro-

gram TL-1n, supported by UK's institutional CTSA from the NIH.

Dr. Jia Luo received a VA Merit Review Award titled "Thiamine Deficiency and Alcohol-induced Neurodegeneration". The project investigates the mechanism underlying brain damages caused by chronic alcohol abuse.

Dr. Olivier Thibault is a proud mentor



Trevor Krolak, far left with his mentor Dr. Olivier Thibault, far right

Trevor Krolak is a Paul Laurence Dunbar high school student who has been mentored by Dr. Olivier Thibault for the last year and a half. Trevor participates in Dunbar's [Math, Science and Technology Center](#) program (MSTC) for the gifted and talented in the academic areas of math and science. MSTC offers a rigorous four-year curriculum designed to develop students who are internationally competitive. After winning first place in the Cell and Molecular Biology division and second place in the Best of Fair at the Kentucky Science & Engineering Fair, he advanced to the Intel International Science and Engineering Fair (Intel ISEF), held May 12-17 in Phoenix. Trevor's project "Analysis of Changes Regarding Insulin Signaling in Response to High Fat Diet and Aging" received an honourable mention from the Endocrine society for his work conducted in Dr. Thibault's lab on insulin receptors.

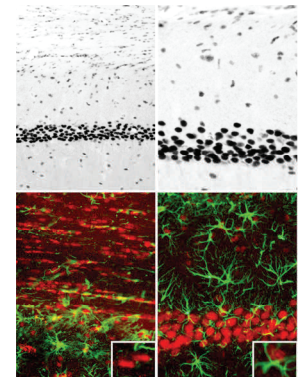
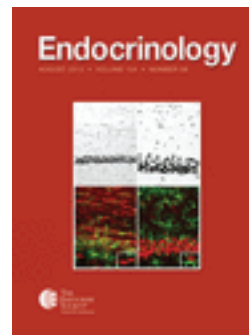
Dr. Sanda Despa continued

Dr. Sanda Florin completed post-doctoral work with Dr. Donald Bers in the Department of Physiology at Layola University Medical Center in Chicago. She was a research associate at Layola from 2005 to 2008. After leaving Layola she served as an assistant professor in the Department of Pharmacology at the University of California Davis from 2008 until coming to the University of Kentucky.

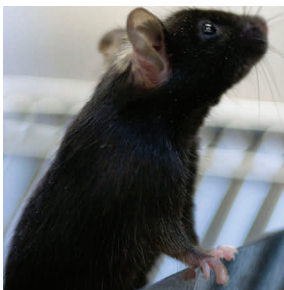
Dr. Sanda Florin's research interests are in mechanisms of cardiac Ca^{2+} dysregulation and arrhythmias induced by ankyrin-B loss-of-function. She is also interested in $[Ca^{2+}]_i$ and $[Na^+]_i$ regulation in the healthy and diseased heart, particularly in diabetic heart disease, atrial fibrillation and heart failure. Other interests are the regulation, localization and function of the Na/K pump and Na/Ca exchanger in the heart, as well as the association and functional interaction between Na/K and phospholemman in the heart.

Endocrinology cover of August issue features a figure from the [recently published research](#) conducted by Drs. Chen, Blalock, Curran-Rauhut, Kadish, Blalock, Brewer, Porter, and Landfield. (See manuscripts).

Glucocorticoid Receptors regulate gene expression, mediate stress responses and influence brain aging, but their diverse roles in different brain cell types are poorly understood.



Come out of the shadows



If your webpage profile is blank, populate it using this simple, do-it-yourself process. Go to: pharmacology.med.uky.edu Find your placeholder silhouette under "People".



Logon with your username and password. Choose "Edit" and upload a picture from your files.

Personalize your page in the categories of "Basic Info", "Professional", "Research", and "Social."

Just follow the instructions posted at this link : <http://med.uky.edu/updating-your-com-web-directory-profile> Need help or a photograph? Contact [Mary Lowell](#).